

MAINTENANCE & CLEANING INSTRUCTIONS

EVERYDAY MAINTENANCE AND REMOVAL OF COMMON STAINS

As with any other material for interior design, a CleanTouch surface should be cleaned regularly. It does not require any special maintenance, just a damp cloth with warm water or a mild detergent. Almost all regular household cleaning products or disinfectants can be safely used. For the most common stains, you can simply clean the surface with warm water using a non-abrasive cloth. Tougher stains can be removed with non-abrasive household cleaners or solvents.

For older, dried or caked-on stains, use a magic sponge or soft cloth to remove them. After using any solvents, we recommend rinsing the surface with warm water and a detergent. Always rinse thoroughly to remove the detergent with clean water, preferably warm.

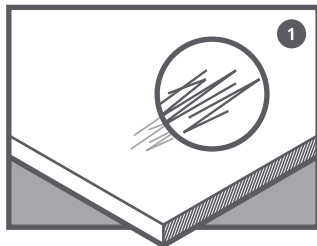
STUBBORN STAINS AND MINOR SCRATCHES

CleanTouch surfaces have a unique non-porous external layer, allowing you to keep it neat with simple, everyday care and cleaning methods. In case of stubborn stains, we recommend the use of a specific cleaning agent (as per the table reported on next page) to remove any trace of the stain.

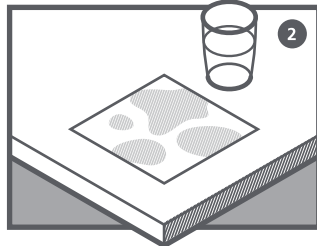
In case of micro-scratches, please refer to the MAINTENANCE INSTRUCTIONS for the surfaces as illustrated below.

MAINTENANCE INSTRUCTIONS

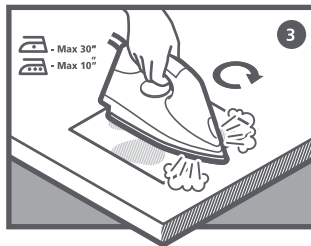
IRON



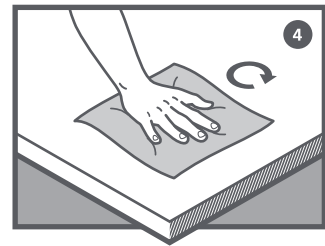
1. Superficial defects caused by micro-scratches.



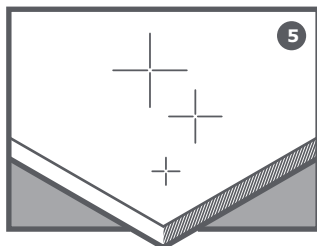
2. Place a dampened sheet of kitchen roll over the area where the micro-scratches can be seen.



3. Place the hot iron on the surface that needs repairing. Do not leave the iron on the surface for more than 10 seconds at a time.



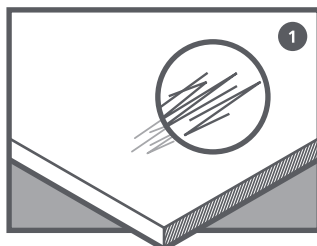
4. Rinse the repaired area with lukewarm water and a microfibre cloth.



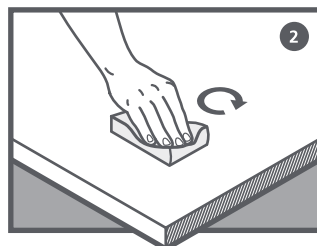
5. The surface should now be healed.

MAINTENANCE INSTRUCTIONS

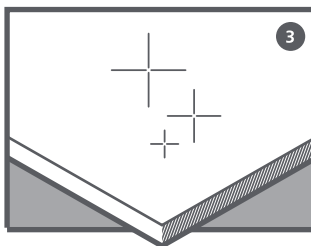
MAGIC SPONGE



1. Superficial defects caused by micro-scratches.



2. Rub the magic sponge on the area where the micro-scratches can be seen. The sponge can be used dry or slightly damp.



3. The surface should now be healed.

USEFUL CLEANING ADVICE

For the best results when cleaning CleanTouch, it is important to remember the following advice:

- although very resistant, a CleanTouch surface must still never be treated with products containing abrasive substances, macroabrasive sponges or unsuitable materials such as sandpaper or steel wool;
- strongly acidic or alkaline products should be avoided because they can stain the surface;
- bleach and heavily-chlorinated products should be avoided because they can degrade the surface. Sodium hypochlorite should be used at concentrations lower than 5%, and for no more than 5 minutes at a time, then rinsed off with a sponge or towel;
- hydrogen peroxide at concentrations lower than 3% should be carefully rinsed off. For concentrations higher than 3%, we recommend avoiding leaving this solution in contact with the surface for more than 10 minutes at a time, and the surface must be thoroughly rinsed with a non-abrasive sponge and then dried well;
- when using solvents, the cloth used must be perfectly clean so as not to leave marks on the CleanTouch surface. Any marks may, however, be removed by rinsing with hot water and drying well;
- do not use furniture polishes or wax-based cleaners in general, because they tend to form a sticky layer on the CleanTouch surface that attracts and traps dirt;
- do not use metal scrapers, iron brushes or any other metal tool to remove stains, paint, plaster or other substances from the surface.

NOTE: CLEANING INSTRUCTIONS AVAILABLE ON NEXT PAGE